



# Urban Greening in Paris

Julia Evelyn



# Background

New mayor of Paris elected in 2014 →  
Anne Hidalgo

Platform of environmentalism, pollution  
reduction

Cut car space by 50%!



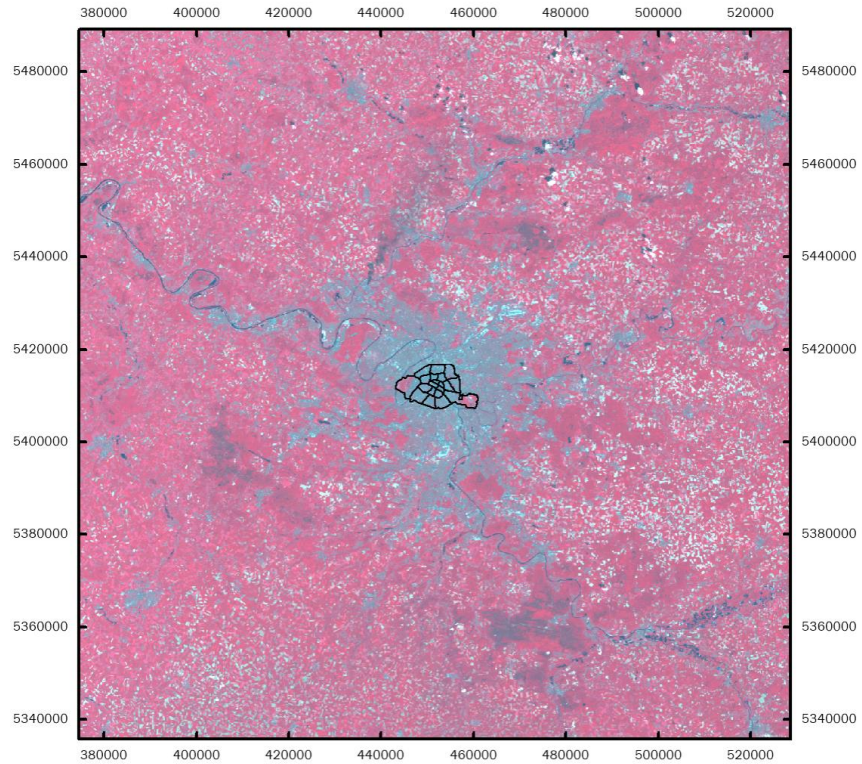




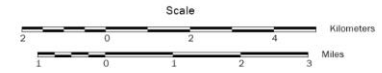
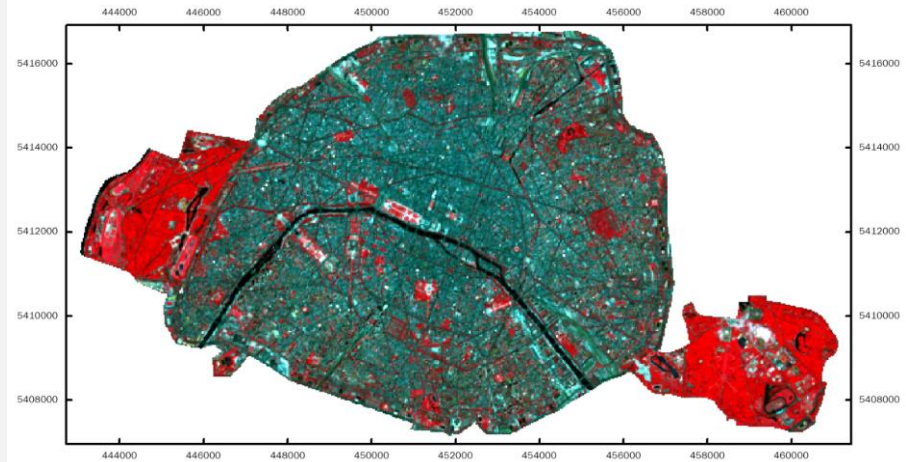
## Research Question

Is there a measurable difference between amounts of greenspace in Paris before Anne Hidalgo was elected in 2014 and after?

# Paris and surroundings, 2019



# Paris study area, 2019



Landsat 8 OLI 2019 images, RGB 5,4,3

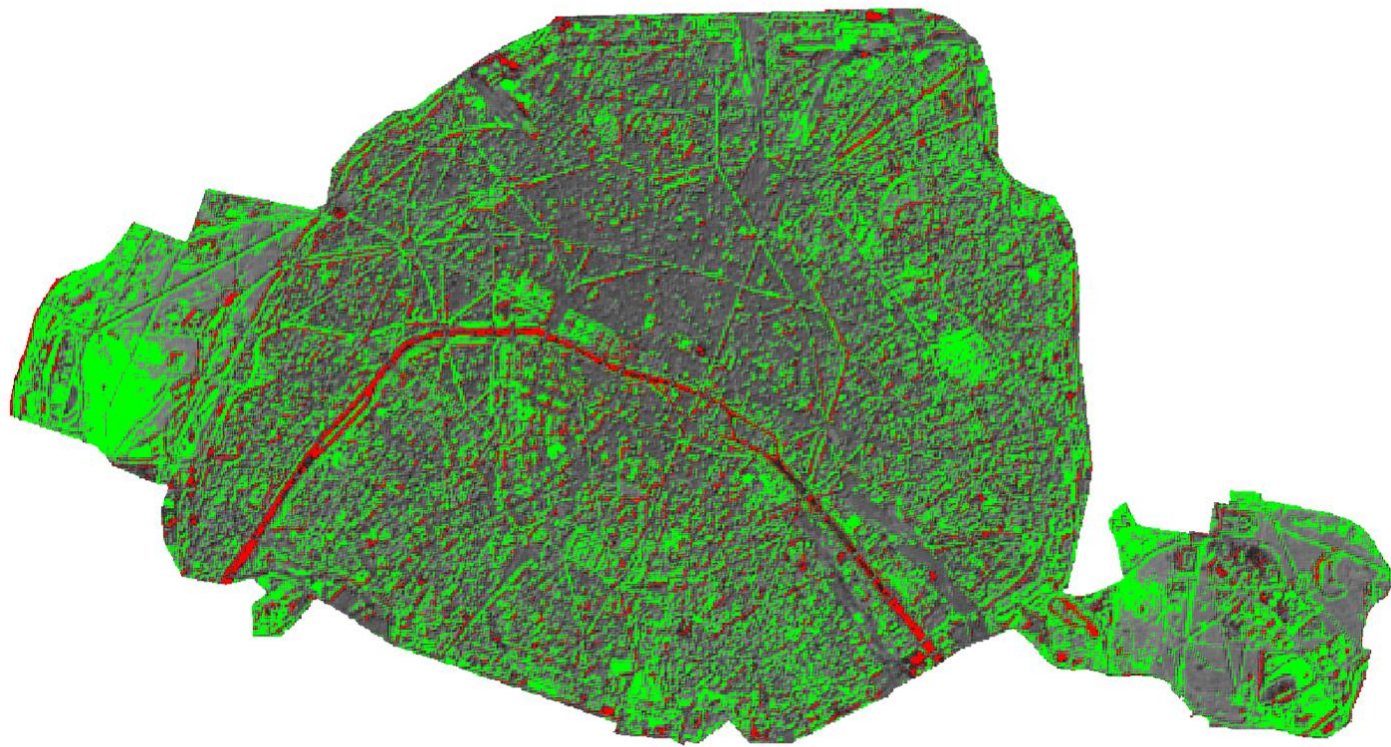
## Paris Urban Greening, 2010-2019

### Change in NDVI

15%+ Increase



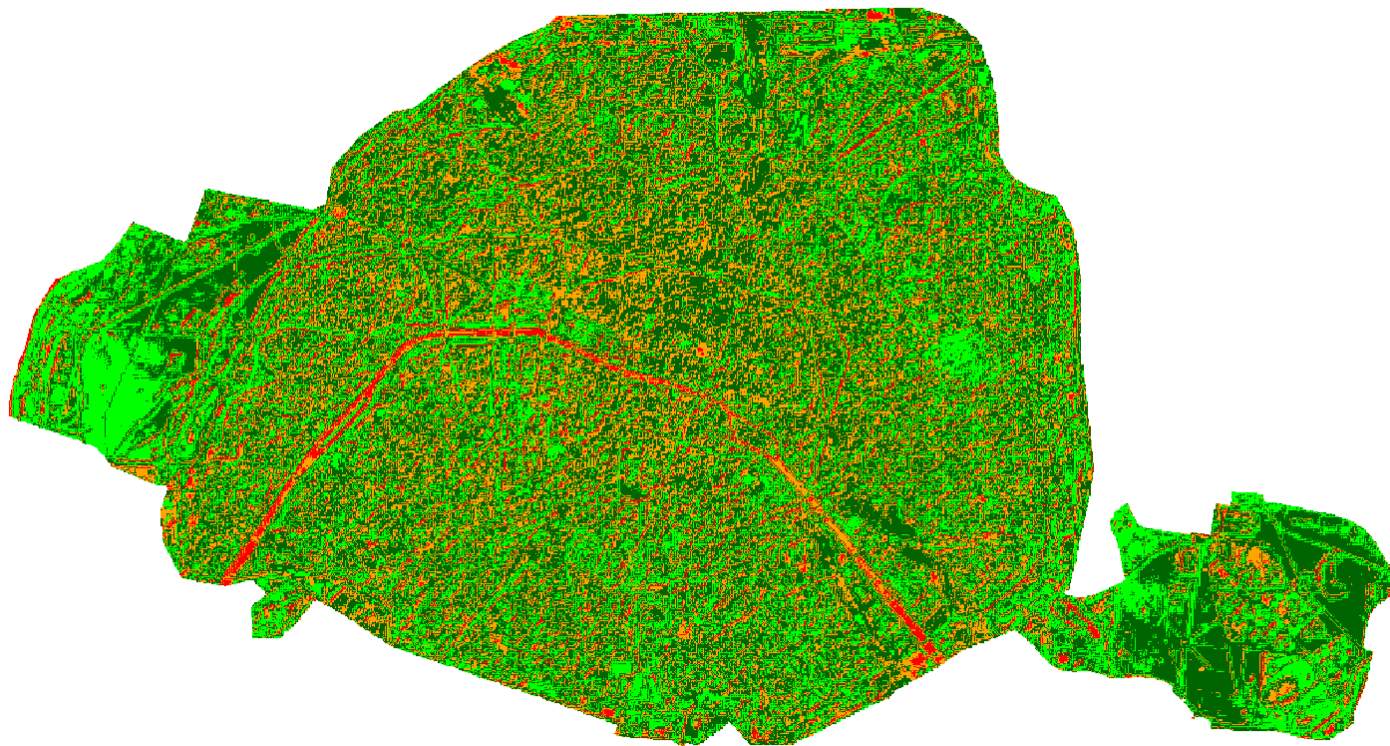
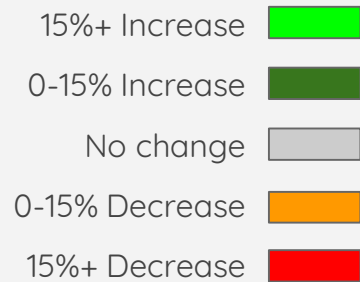
15%+ Decrease



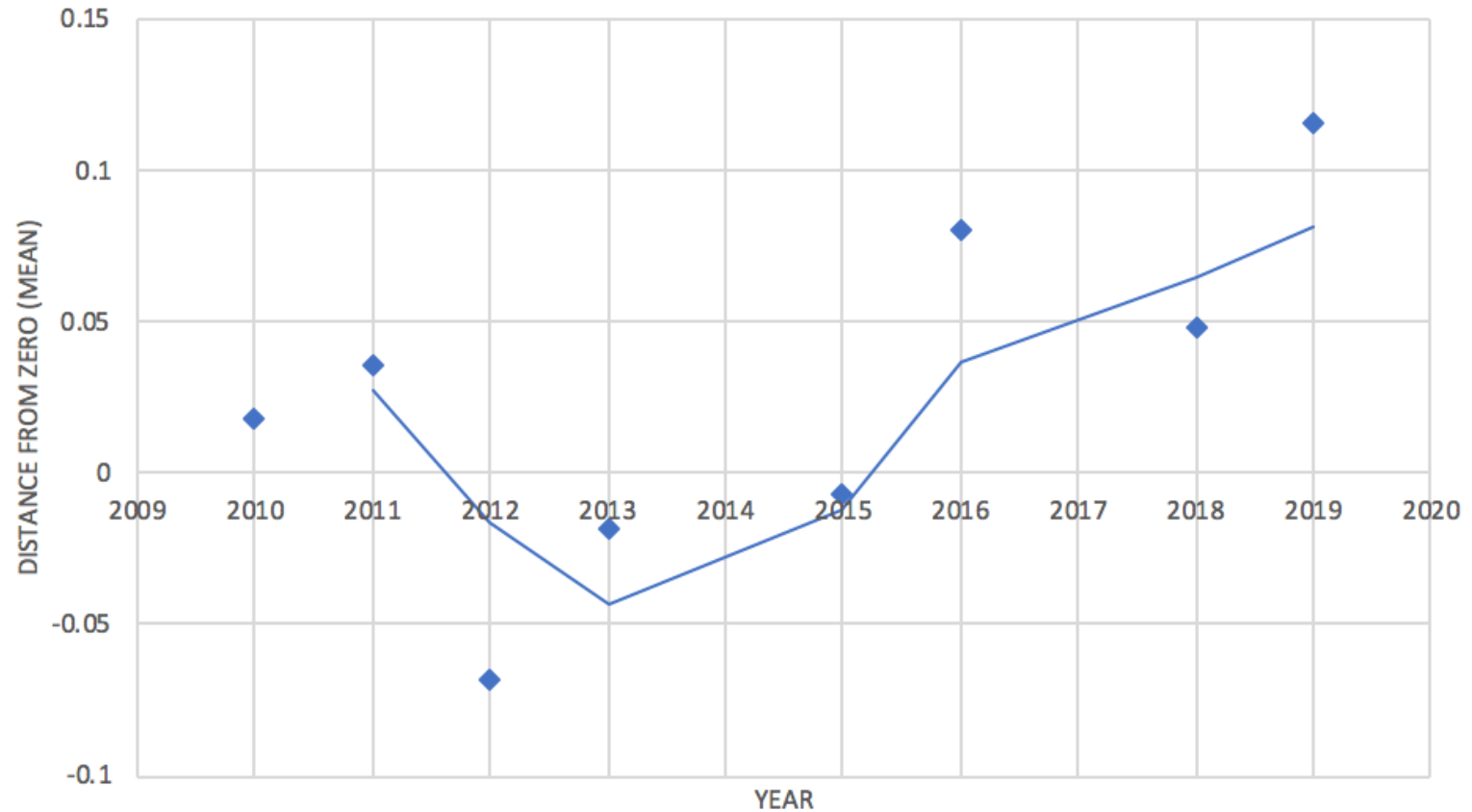


## Paris Urban Greening, 2010-2019

### Change in NDVI



## AVERAGE NDVI VALUES





# Conclusions/Considerations

Overall, NDVI is increasing in Paris! It does appear to be increasing more after 2014.

Stuff that might affect my results:

- Not all images from same month
- Occasional small clouds could alter data

# References and Data

<https://www.lejdd.fr/JDD-Paris/Hidalgo-veut-diviser-par-deux-la-place-de-la-voiture-dans-le-coeur-de-Paris-837976>

<https://www.citylab.com/environment/2019/06/paris-trees-famous-landmarks-garden-park-urban-forest-design/591835/>

<https://www.nytimes.com/2019/10/05/world/europe/paris-anne-hildago-green-city-climate-change.html>

<https://opendata.paris.fr/explore/dataset/arrondissements/information/>

Landsat 7 ETM and Landsat 8 OLI, images from 2010-2019 ([earthexplorer.usgs.gov](http://earthexplorer.usgs.gov))